



# PATH TO 5G & IMPACTS TO FIRST RESPONDERS

---

*CHRIS SAMBAR*

Senior Vice President, AT&T FirstNet,  
AT&T Business

# AT&T'S PATH TO 5G

THE COMPLETED HOME  
**PLANS FOR FIRST TO MOBILE 5G**

THE FRAMEWORK  
**SOFTWARE DEFINED NETWORKING  
AND FIBER**

OUR FOUNDATION  
**5G EVOLUTION AND LTE-LAA**





*SOFTWARE  
DEFINED  
NETWORK* & **5G** & *EDGE*





**5G** AT&T JOURNEY

---

First 5G Business  
Customer Trial  
**OCTOBER 2016**

---

Expanded Multi-City  
5G Trials  
**SUMMER 2017**

---

New 5G testbed  
**AUSTIN, TEXAS**

---

Commercial Deployment  
**Atlanta, Dallas, Waco, Parts of 12 Cities**  
**2018**

© 2018 AT&T Intellectual Property. All rights reserved. AT&T, Globe logo, Mobilizing Your World and DIRECTV are registered trademarks and service marks of AT&T Intellectual Property and/or AT&T affiliated companies. All other marks are the property of their respective owners. AT&T Proprietary (Internal Use Only). Not for use or disclosure outside the AT&T companies except under written agreement.





WACO

Wireless speeds of 1.2 Gbps  
in a 400 MHz channel

RAN Latency rates at 9-12 milliseconds

Our 5G millimeter wave solution  
effectively delivered into a building





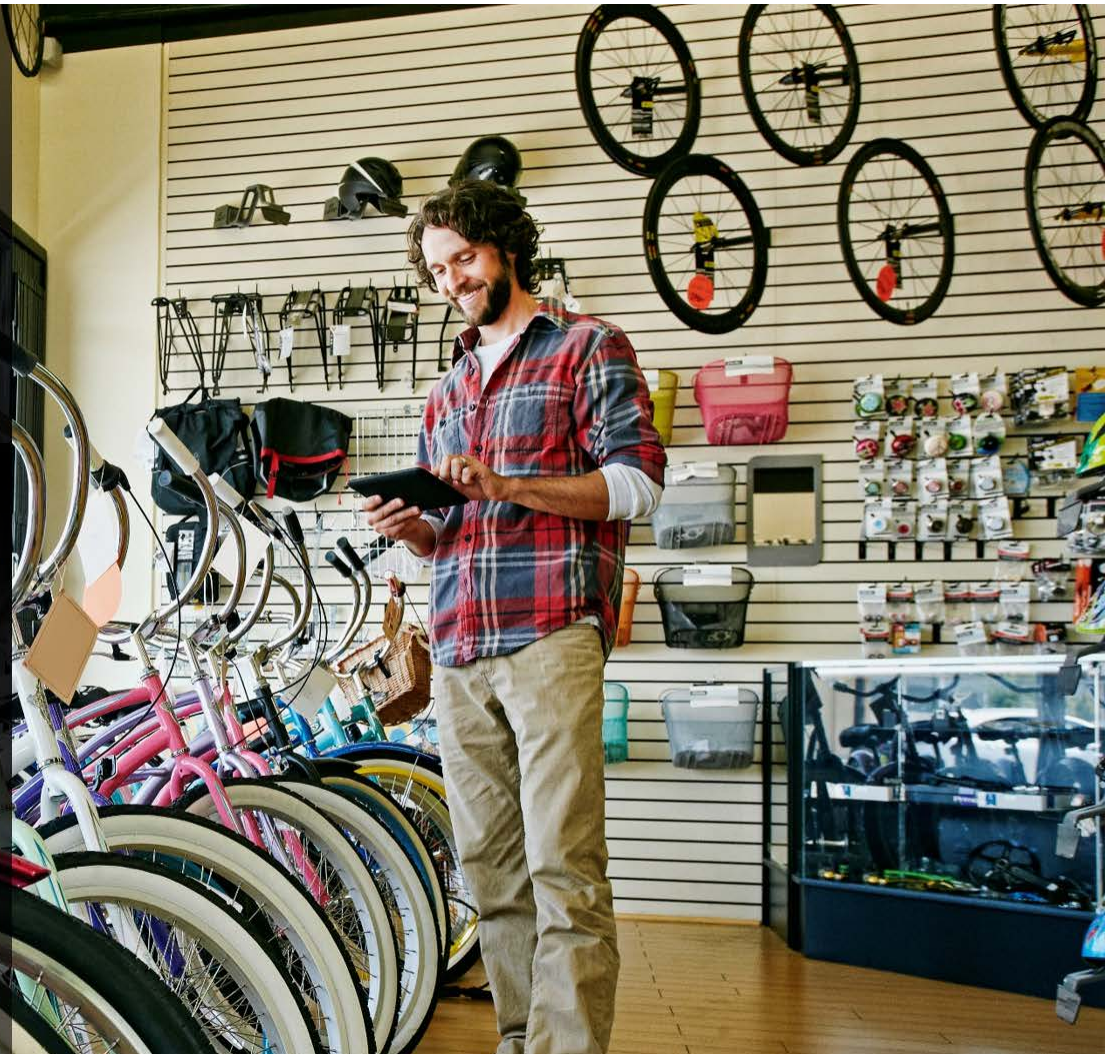
## KALAMAZOO & SOUTH BEND TRIALS

No significant impacts on 5G mmWave  
signal performance due to weather

mmWave signals can penetrate  
materials better than anticipated

1 Gbps speeds under line of sight  
conditions up to 900 feet

Full end-to-end 5G network architecture



# 5G AND PUBLIC SAFETY



Smart Cities



Autonomous Vehicles



Camera Networks



AR/VR



Sensors

5G will ultimately be about creating platforms to power entirely new classes of applications and experiences built on software, edge computing, and artificial intelligence

